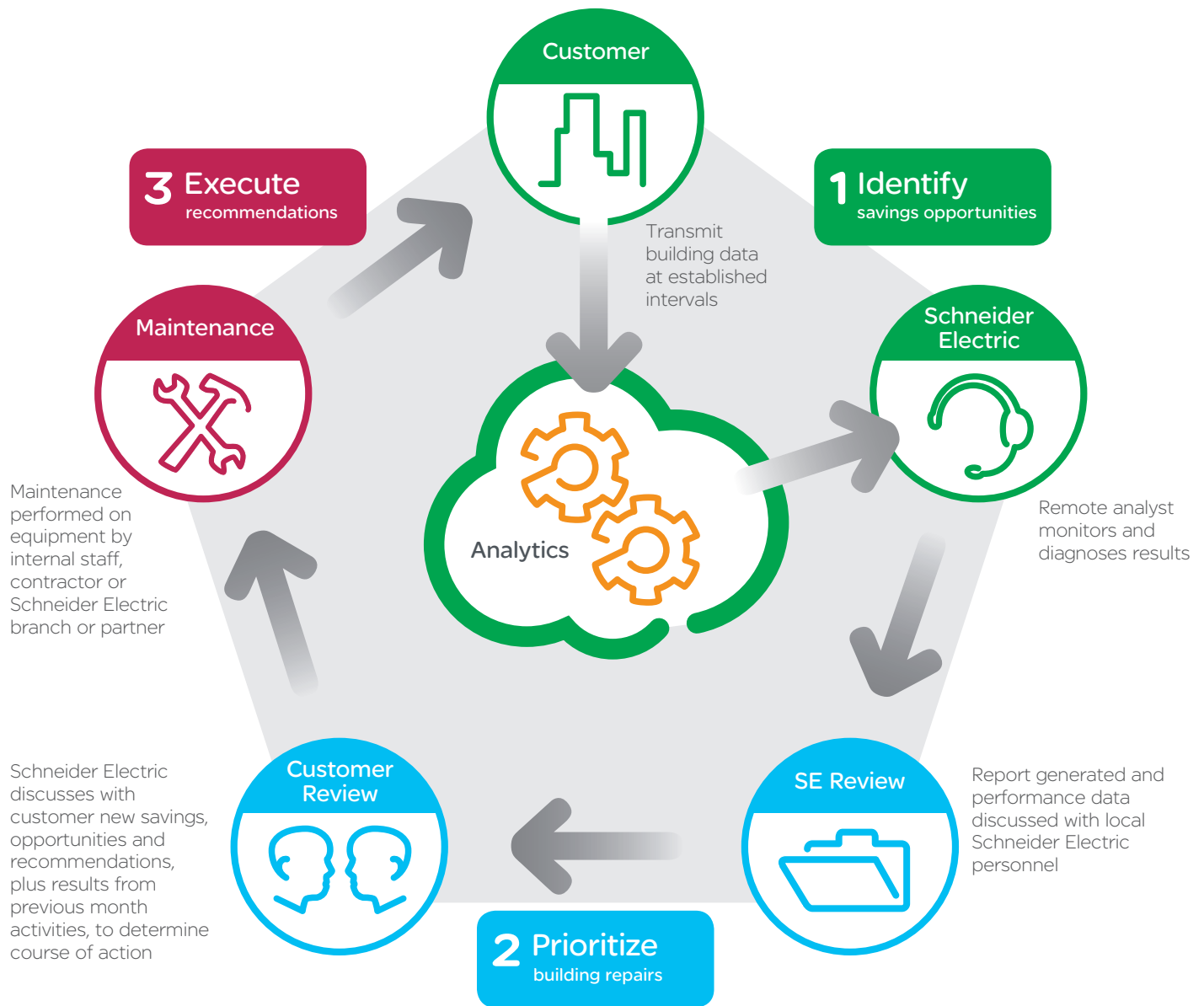


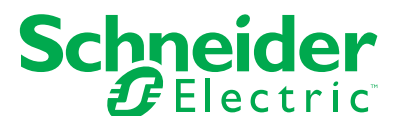
Building Analytics Managed Service



Monitor, detect, diagnose and identify energy savings opportunities by connecting your building to Schneider Electric's cloud-based Building Analytics.

Schneider Electric's Building Analytics is an advanced lifecycle managed service that provides hosted technology and remote monitoring services to deliver advanced building diagnostics and operational improvement opportunities. The Schneider Electric local service branch or partner works closely with remote analysts to interpret the findings and provide you a prioritized list of the appropriate recommendations for your building. Additionally, service technicians can remotely access Building Analytics information to use their time most effectively during on-site service calls to repair and troubleshoot any action items. Your end result, a better functioning building with significant and ongoing cost savings when energy and operational efficiency recommendations are implemented.

Make the most of your energySM



Building Analytics Managed Service



1. Identify savings opportunities

Building Analytics continuously diagnoses facility performance then automatically generates a ranked list of opportunities for creating operational efficiencies and energy cost savings.

Building	Equipment	Notes	Severity Priority
Anon Hospital	AHU_11	Static pressure lower than setpoint. Supply fan speed constant. Return fan speed constant.	6
Anon Hospital	AHU_10	Static pressure lower than setpoint. Supply fan speed constant.	6
Anon Hospital	CAV8_2	Room temp lower than setpoint. Stuck reheat valve.	4
Anon Hospital	CAV5_82	Supply flow lower than setpoint. Stuck reheat valve. – May be sensor error	4
Anon Hospital	CAV3_11	Sensor error. Stuck reheat valve.	4

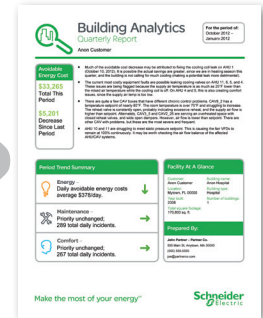


2. Prioritize building repairs

Schneider Electric supports you by highlighting required action items using performance trending and expert guidance.

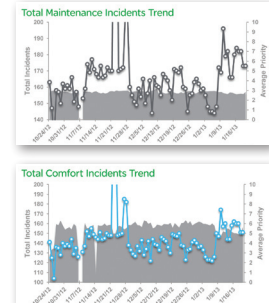
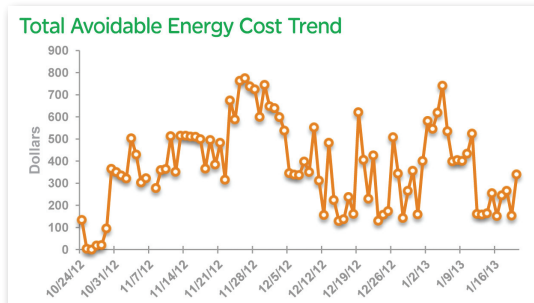
Recommended Actions

- The AHU 6 static pressure is being driven by one zone – you could get over \$11,000 savings by lowering it
- Review temperature performance and air flow balance of CAV units with high comfort priorities
- Check AHU 4, 5, 6, and 11 for leaking cooling valves
- Check flat-lined temperature sensor in zone served by CAV1_16
- Explore why AHU 10 and 11 have such low static pressure
- Check CAV8_2 and CAV3_11 for stuck reheat valve – valve fully open, but temperature can't reach setpoint



3. Execute recommendations

When Building Analytics recommendations are implemented, the results are evident – driving down energy costs and improving building performance.



> Put our expertise to work for you

Schneider Electric – USA
 1650 West Crosby Road
 Carrollton, TX 75006
 Tel: 877-822-2601

www.schneider-electric.us